

T	
W	
L	
B	
X	Standard[ ]/Chisel Point[ ]
M	Standard[ ]/Full Taper[ ]/ Polished[ ]
Set	IL[ ]/IS:_____/OS:_____
OD	
ID	
H	
R	
Shaft Dia.	
C1:_____/C2:_____/C3:_____	
C4:_____/C5:_____	
Positioner Type	Block[ ]/Tab[ ]/Y-Lug[ ]/ Angled[ ]
E1:_____/E2:_____	
E3:_____/E4:_____	

[ ]Quote Only [ ]Start Order PO# \_\_\_\_\_

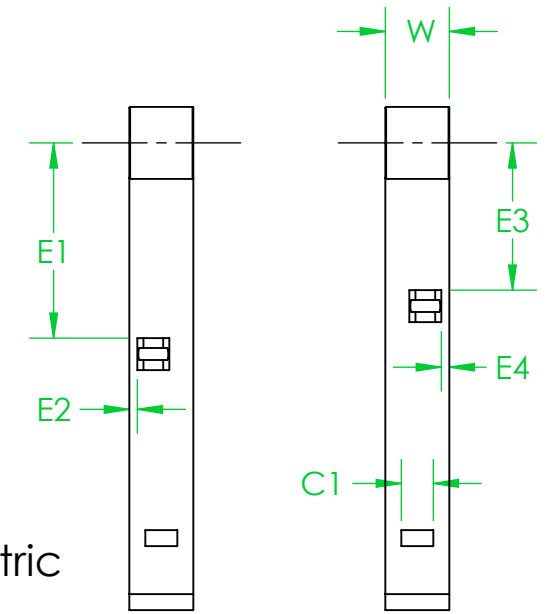
Phone: 844-428-8224  
 Fax: 844-724-2417  
 Email: info@allproforks.com

Machine Model#: \_\_\_\_\_

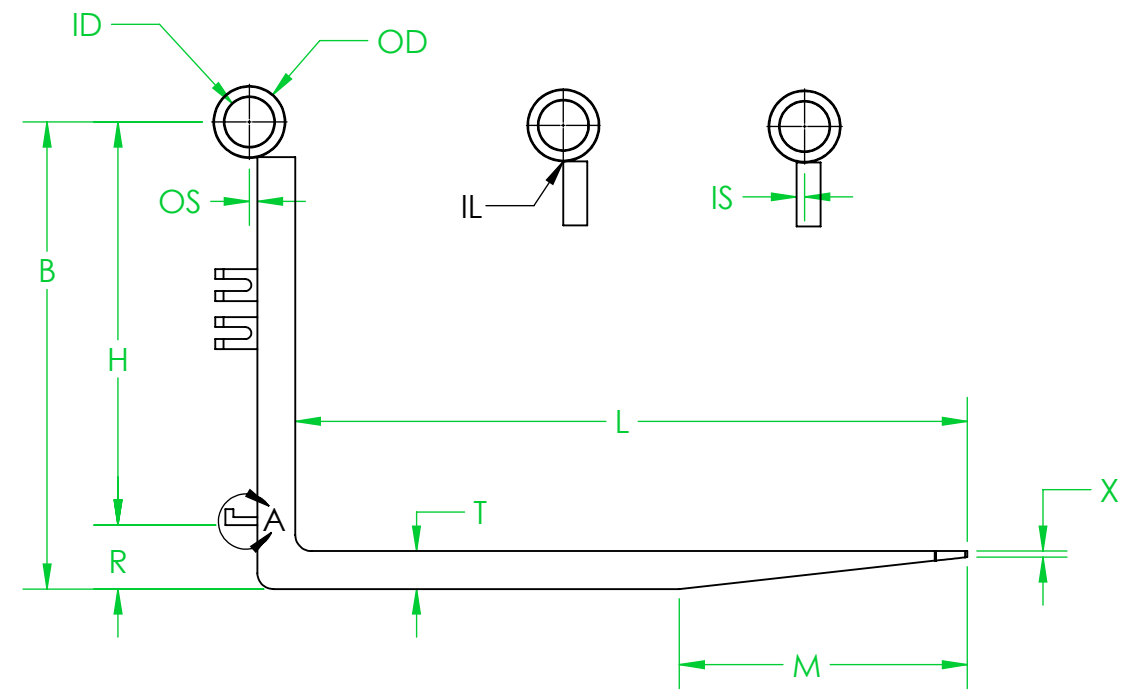
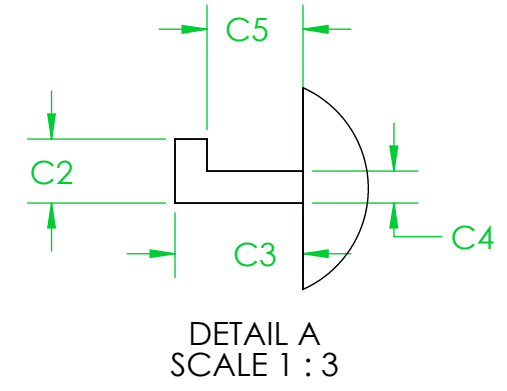
Machine Capacity: \_\_\_\_\_

Date: \_\_\_\_\_

After selecting your positioner type, see Form-PS to fill out the dimensions of your positioner.



Left Fork Right Fork



All dimensions may have a ± factor to accommodate metric conversion. Forks are quoted according to these specs. Changes may affect pricing. Specs must be verified as accurate. Forks produced to verified specs are non-returnable, non-cancellable.

Contact Name: \_\_\_\_\_

Contact Phone: \_\_\_\_\_

Customer Signature: \_\_\_\_\_

Date: \_\_\_\_\_

PROPRIETARY AND CONFIDENTIAL THE INFORMATION CONTAINED IN THIS DRAWING IS THE SOLE PROPERTY OF ALL-PRO ANY REPRODUCTION IN PART OR AS A WHOLE WITHOUT THE WRITTEN PERMISSION OF ALL-PRO IS PROHIBITED	UNLESS OTHERWISE SPECIFIED:		NAME	DATE	<b>ALL-PRO</b> TITLE: Shaft Type Fork with Positioners DWG. NO. Form-SFP SCALE: 1:12 REV. SHEET 1 OF 1
	DIMENSIONS ARE IN INCHES		DRAWN	Caleb 5/2/2017	
	TOLERANCES:		CHECKED		
	FRACTIONAL ± .5		ENG APPR.		
	ANGULAR: MACH ± .5 Deg		MFG APPR.		
TWO PLACE DECIMAL ±.25		Q.A.			
THREE PLACE DECIMAL ±.125		MATERIAL			
Weight: (lbs)		COMMENTS:			
FINISH					
DO NOT SCALE DRAWING					